

P SEVALD NURSERY PEONIES 2017



KRINKLED WHITE



R E D G R A C E

The herbaceous peony is a long lived, cold hardy perennial which thrives from zone 2 in the north to parts of zone 8 in the southern United States. Roots should be planted in deep, well drained, fertile garden soil, with eyes about two inches below the surface in the north, but just barely below the surface in the extreme south. Plants should be spaced 4 feet apart, and should get at least 6 hours of sunlight daily. In the far south the flowers will last longer if they have high shade during the hottest part of the day.

In our area peonies bloom in the month of June. Fall is the proper planting time, and we send out roots in September and October, since at this latitude good weather starts to run out by November. We send out husky 3 to 5 eye divisions.

*Take up your basket -
your notepad too -
it's time to pick some
peonies for your garden.*



FIRELIGHT



ALBERT CROUSSE



ALEXANDER FLEMING



AMA-NO-SODE



AMERICA



ANN COUSINS



AVALANCHE



BETTER TIMES



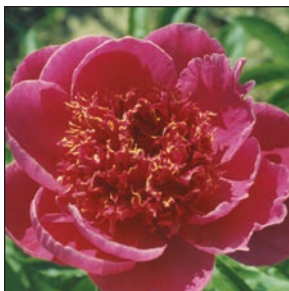
BO-PEEP



BOWL OF BEAUTY



BOWL OF CREAM



BREAK O' DAY



CARRARA

ALBERT CROUSSE

(Crousse. 1893)
Late, very full double. One of many fine older varieties which originated in France. Each plant will reward you generously with an abundance of medium pink flowers.....\$20.00

ALEXANDER FLEMING

(Blonk, Netherlands, before 1950)
Double, early, midseason. Large, dark pink, a bit lighter toward the edges of the petals. A very fine variety, not to be overlooked.....\$25.00

AMA-NO-SODE

(Japan)
Japanese type, midseason. Attractive flowers on a vigorous plant. A large cup of rose pink guard petals surround a full mound of staminodes which are yellow, with pink tints..... \$20.00

AMERICA

(Rudolph/Klehm, 1976)
Hybrid, named in the year of our country's bicentennial, this is a vigorous plant that has large flowers with a bright yellow center. America Peony Society Gold Medal Winner.....\$30.00

ANN COUSINS

(Cousins, 1946)
Magnificent white double, easily recognized by its very full, dome shaped flowers with broad, gracefully recurved petals. Blooms late..... \$25.00

AVALANCHE

(Crousse, 1886)
Blush white double, with some of the central petals accented with a thin red edge. Introduced over a hundred years ago, this old French favorite makes a fine garden flower. Long lasting blooms with waxlike petals. Blooms late midseason.....\$25.00

BETTER TIMES

(Franklin, 1941)
Double. late midseason. Many showy, deep pink flowers on a tall plant. Excellent for the garden, or when used as a cut flower.....\$25.00

BO PEEP

(Auten, 1944)
Tall plant with medium size, Japanese type flowers. Lively colors, with orchid pink outer petals, and a deeper toned center.....\$25.00

BOWL OF BEAUTY

(Hoogendorn, 1949)
Japanese, late midseason. A vigorous plant, and a very good variety. Large flowers have pink outer petals and a mound of pale yellow staminodes. Not so well known in America, it has won high honors in flower shows in Europe. We think that once you have it you will treasure it always.....\$20.00

BOWL OF CREAM

(Klehm, 1963)
Large creamy white double. Beautiful flowers on a fine plant.....\$30.00

BREAK O' DAY

(Murawaska, 1947)
Japanese, midseason. Broad guard petals of deep rose pink surround center staminodes that are wine red with gold tips. A good plant with attractive flowers..... \$20.00

CARARRA

(Bigger, 1952)
Japanese, midseason white guard petals are nicely cupped, and surround a center mound of white staminodes.....\$20.00



CHESTINE GOWDY



CORAL FAY



CORAL N' GOLD



CORA STUBBS



CRUSADER



DAVID HARUM



DO TELL



DOROTHY J.



DR. WALTER RUMPF



DUCHESS de NEMOURS



EARLY SCOUT

CHESTINE GOWDY

(Brand, 1913)

Late double. Distinctive form and color, with swirls of light rose and creamy white. Delightful fragrance..... \$25.00

CORAL FAY

(Fay, 1972)

Semi-double hybrid, early. This is a cross between lactiflora and tenuifolia (single fern leaf peony). A good plant, with leaves that are slender and attractive, and flowers with a bright, shocking pink hue found only in hybrids..... \$25.00

CORAL N' GOLD

(Cousins, registered by Klehm, 1981)

Hybrid, plant is vigorous, and has large, attractive flowers with deep coral pink petals and a center of bright golden stamens.....\$20.00

CORA STUBBS

(Krekler)

Midseason Japanese. Guard petals are rose pink, and the center mound is light yellow blended with pink.....\$25.00

CRUSADER

(Glasscock, 1940)

Fine semi-double medium red hybrid. One of the early blooming varieties we recommend to give your peony season a bright early start.....\$20.00

DAVID HARUM

(Brand, 1920)

Double, midseason, light red. A fine garden flower and excellent cut flower, which can be cut in late bud stage and kept in cold storage until needed. When brought to room temperature the large blooms open easily, and are long lasting.....\$20.00

DO TELL

(Auten, 1946)

Japanese. The petal tips are finely serrated and the color is a delicate orchid pink. The center staminodes have the same color, but it is intermingled with a deep wine red and also gold.....\$25.00

DOROTHY J.

(Jones, 1938)

Late season double, light pink to blush. Another tall plant with large flowers which may need support in the garden. The rewards are well worth the effort.....\$25.00

DR. WALTER RUMPF

(Brand, 1967)

Deep pink rose form double. A late blooming variety with beautiful flowers..... \$30.00

DUCHESS DE NEMOURS

(Calot, 1865)

Double, early to midseason. White guard petals cupped around a full center of light canary yellow. Another fine old variety from France which is well regarded wherever peonies are grown.....\$20.00

EARLY SCOUT

(Auten, 1952)

Very early hybrid. Low growing red single, with cut leaf foliage.....\$20.00



EDULIS SUPERBA



ELSA SASS



ELSIE PICKETT



FAITH FENTON



FARIBO GOLD



FELIX CROUSSE



FELIX SUPREME



FIRELIGHT



FRANCES WILLARD



FRANK NEWBOLD



FRIENDSHIP



GAIL TISCHLER

EDULIS SUPERBA
(Lemon, 1824)
Double, early, old rose pink,
floriferous and fragrant. A very
reliable cut flower.....\$20.00

ELSA SASS
(Sass, 1930)
Late double white. A gold medal
winner and a good show flower. Low
growing, fine landscape plant.
Large, very shapely blooms..... \$25.00

ELSIE PICKETT
(Tischler, 1967)
Double, midseason. Large nicely
rounded blooms of a bright, deep
pink color. Both plant and flower
deserve high merit.....\$25.00

FAITH FENTON
(Brethour, Canada)
Double, midseason. Light pink
with red markings. Tall plant
with good stems.....\$25.00

FARIBO GOLD
(Tischler, 1966)
Japanese. White outer petals around
a golden center mound. Very robust.
Bob Tischler owned the Brand Peony
Farm, and he named this variety to
honor his home town, Faribault,
Minnesota..... \$20.00

FELIX CROUSSE
(Crousse, France, 1881)
Double, late midseason.
Well formed, lustrous red
double bloom.....\$20.00

FELIX SUPREME
(Kriek, 1955)
Fine double red, blooms medium
late. This sure opener makes a fine
garden plant and is also used as a
cut flower.....\$20.00

FIRELIGHT
(Saunders, 1950)
Hybrid, very early. Flowers open a
bright rose pink. At the base of each
petal is a prominent red flare. An exotic
beauty for your collection..... \$30.00

FRANCES WILLARD
(Brand, 1907)
Midseason. A fine white double,
sometimes with red markings.....\$20.00

FRANK NEWBOLD
(Gumm)
Medium pink Japanese, with
bright yellow center..... \$20.00

FRIENDSHIP
(Glasscock-Falk, 1955)
Hybrid, early. Broad, dense plant
produces a multitude of flowers.
A delight to find in your garden,
bright pink petals edged in white.
Easy to grow and easy to like.
Good cut flower too..... \$20.00

GAIL TISCHLER
(Tischler, 1964)
Pink Japanese. Tall, very large plant,
with large attractive flowers.....\$20.00



GAY CAVALIER



GAY PAREE



GENE WILD



HARI-AL-NIN



HARRY L. RICHARDSON



HAZEL BRAND



HEIDI



HENRY POTIN



HENRY ST. CLAIRE



HERMIONE



HIGHLIGHT



HIT PARADE

GAY CAVALIER <i>(Glasscock, 1944)</i> Hybrid, early. Bright red cupped single, on a tall plant with nice foliage.....\$20.00	HEIDI <i>(Tischler, 1972)</i> Japanese. Compact plant about 28 inches tall is covered with lavender pink blooms. Very nice.....\$20.00
GAY PAREE <i>(Auten, 1933)</i> Anemone type. Distinctive color, with guard petals cerise, and center petaloids splashed with lighter tones. Seems to be a favorite with everyone.....\$20.00	HENRI POTIN <i>(Doriot, 1924)</i> Eye catching flowers, with guard petals of deep pink tinted carmin, and a large mound of yellow staminodes.....\$20.00
GENE WILD <i>(Cooper, 1956)</i> Medium to large, lovely full rose type double. Delicate pink petals are occassionally edged in red. The petals are well spaced, and not too crowded. Very Nice.....\$25.00	HENRY ST. CLAIRE <i>(Brand, 1941)</i> Red Double, midseason. Fine plant covered with attractive blooms. A great garden plant, and an excellent cut flower.....\$20.00
HARI-AI-NIN <i>(Babcock, 1929)</i> Japanese, midseason. Sturdy plant. Large flowers with dark red guard petals and a mound of narrow staminodes the same color.....\$22.00	HERMIONE <i>(Sass, 1932)</i> Late midseason double. A pleasing shade of medium pink.....\$25.00
HARRY L. RICHARDSON <i>(Rosenfield, 1925)</i> A fragrant bright red double. In our field this is one of the very last to bloom.....\$25.00	HIGHLIGHT <i>(Auten, Introduced by Wild, 1952)</i> Double. Very nice, very dark red high built bloom.....\$25.00
HAZEL BRAND <i>(Tischler, 1977)</i> A nice light pink Japanese, with a contrasting center.....\$22.00	HIT PARADE <i>(Nicholls, 1956)</i> Japanese, midseason. Rose pink outer petals. with center of yellow and pink. Flamboyant flowers on a tall plant will make a bold statement in your garden.....\$20.00



ILLINI BELLE



ILLINI CHIEF



ILLINI WARRIOR



JAMES PILLOW



JOHN GARDNER



KANSAS



KARL ROSENFELD



KRINKLED WHITE



LADDIE



LARGO



LAURA DESSERT

ILLINI BELLE
(Glasscock, 1941)
Hybrid semi-double, very early.
Beautiful blooms of very dark,
lustrous red. Fairly short plant
with strong stems and upright
habit works well in the landscape.
Highly recommended.....\$20.00

ILLINI CHIEF
(Glasscock, 1940)
Red single hybrid on a
strong plant..... \$20.00

ILLINI WARRIOR
(Glasscock, 1955)
Hybrid single, early. Deep red
blooms that stay cupped for a long
time. Plant is tall and strong, so
give it room. Excellent companion
plant for Scarlet O'Hara, since plant
habit is very similar, and bloom
time is very close.....\$20.00

JAMES PILLOW
(Pillow, 1936)
Light pink double, late. Distinctive
flowers are higher than they are wide,
with petals as crisp as taffeta. This
variety grows very tall with strong
stems, and is one of the very best
peonies for cut flowers. Introduced
by W.F. Christman.....\$20.00

JOHN GARDNER
(Gardner, before 1951)
Japanese, midseason. Guard petals
are rose red and the wine red stamens
are boldly edged in gold. For added
interest, the leaves are distinctly crinkled.
Fairly short plant with strong stems
works well in the landscape..... \$20.00

KANSAS
(Bigger, 1940)
Light red double, early midseason.
Very large, well formed blooms, on
exceptionally strong stems. This variety
sets a high standard, both in the
garden and on the show table.....\$20.00

KARL ROSENFELD
(Rosenfield, 1908)
Double, midseason. A variety which
has long been near the top among red
peonies, reliable as a garden flower
and a cut flower. Easily recognized
with its large flowers with notched
petal tips.....\$20.00

KRINKLED WHITE
(Brand, 1928)
Single white, late midseason.
Attractive flowers with yellow centers
surrounded by wavy white petals.
Healthy Foliage which is distinctively
light green. A good cut flower. which
holds up well in cold storage.....\$20.00

LADDIE
(Glasscock, 1941)
Hybrid, bright red single, very early.
A dwarf plant, 12 to 18 inches, this
makes a fine rock garden plant.
Parentage, Otto Froebel X Paeonia
tenuifolia (single fern-leaf peony),
gave this variety a narrow, cut leaf
foliage which is midway between
its two parents.....\$25.00

LARGO
(Vories, 1929)
Japanese, midseason. A fine variety
with dark pink guard petals and
pink stamens tipped yellow.....\$20.00

LAURA DESSERT
(Dessert, France, 1913)
Double, anemone type. Guard petals
are creamy white, central mound of
petaloids are lemon yellow. Large,
wonderful flowers..... \$25.00



LETO



LILLIAN GUMM



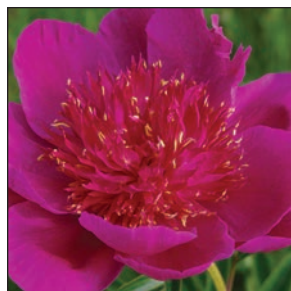
LOTUS QUEEN



LOUIS BARTHELOT



LOWELL THOMAS



MADAME BUTTERFLY



MAESTRO



MAY DAWN



MAXINE WOLFE



MIDNIGHT SUN



MILDRED GARDNER

THE SEVALD NURSERY

Mail Address: 4937 - 3rd Avenue South, Minneapolis, MN 55419
Tel: (evenings or early mornings) 612-822-3279

PLEASE PRINT

Name: _____

Address: _____

City: _____

Telephone: _____

QUANTITY	VARIETY	AMOUNT

PACKING AND SHIPPING

1 Root \$8.00

Each additional root Add \$1.50 per root

Total purchase:

MN residents add 6.875% sales tax:

Pack and shipping:

Total amount enclosed:

We request payment in full at time of order (*check or money order*)

[illegible]

THE SEVALD NURSERY

Mail Address: 4937 - 3rd Avenue South, Minneapolis, MN 55419
Tel: (evenings or early mornings) 612-822-3279

PLEASE PRINT

Name: _____

Address: _____

City: _____

Telephone: _____

QUANTITY	VARIETY	AMOUNT

PACKING AND SHIPPING

1 Root \$8.00

Each additional root Add \$1.50 per root

Total purchase:

MN residents add 6.875% sales tax:

Pack and shipping:

Total amount enclosed:

We request payment in full at time of order (*check or money order*)

[illegible]

LETO

(Neeley, 1930)

Japanese. White guard petals, staminodes light yellow, passing to near white. Whose garden doesn't have space for this one?.....\$25.00

LILLIAN GUMM

(Gumm, 1921)

Late midseason double. Good grower, with large pink blooms.....\$25.00

LOTUS QUEEN

(Murawaska, 1947)

Japanese, midseason. White, with yellow center. Medium sized, attractive cupshaped flowers, like a lotus, or water lily, this will make a cheery and carefree addition to your collection.....\$20.00

LOUIS BARTHELOT

(Doriot, France, 1942)

White double. Blooms late.....\$20.00

LOWELL THOMAS

(Rosenfeld, 1934)

Semi-double to double, midseason. Dark red, with wide petals. Distinctive glossy dark green crinkled leaves.....\$25.00

MADAME BUTTERFLY

(Franklin, 1933)

Japanese, lots of medium sized rose pink flowers.....\$20.00

MAESTRO

(Auten, 1957)

Brilliant dark red, semi-double to almost double, with golden stamens among the petals.....\$20.00

MARTHA BULLOCK

(Brand, 1907)

Double, medium late. Very large blooms with wide petals in a bright shade of old rose pink. Plant is tall and strong.....\$25.00

MAY DAWN

(Glasscock, 1947)

Early blooming glowing rose pink single hybrid with excellent plant habit. Not often available.....\$20.00

MAXINE WOLFE

(Tischler, 1969)

Japanese, rose color with yellow center. Very tall and very late.....\$20.00

MIDNIGHT SUN

(Murawaska, 1954)

Japanese. Guard petals dark red, staminodes red, edged gold.....\$20.00

MILDRED GARDNER

(Gardner, before 1951)

Double, early midseason. Large flowers on a large plant. Color is mauve pink, shaded lighter towards the edges of the petals.....\$20.00

MILLIE STOVER
(Tischler, 2000)
Early midseason. Pink guard
petals with a lacy white center.
First time offered.....\$35.00

MINNIE SHAYLOR
(Shaylor, 1919)
Standard of excellence for white
semi-double lactifloras. Long white
petals and a tidy center mound of
yellow stamens.....\$20.00

MISS AMERICA
(Mann-Van Steen, 1936)
Semi-double white. Early,
strong plants with lots of bloom.
Very popular.....\$20.00

MME EMILE LEMOINE
(Lemoine, France, 1899)
Beautiful white double,
with red markings.....\$25.00

MONS JULES ELIE
(Crousse, France, 1888)
Bomb double, early. Very large,
beautiful blooms of silvery pink.
Dependable, free flowering and
easy to grow, it is found in gardens
around the world, and its reputation
is well deserved.....\$20.00

MONS MARTIN CAHUZAC
(Dessert, France, 1899)
Dark lustrous red double,
midseason. Another old variety
which has stood the test of time.
Blooms tend to be somewhat
variable, and sometimes have
yellow stamens showing.....\$20.00

MR. ED
(Klehm, 1980)
This one is out to get your attention.
The well formed bomb double blooms
are creamy white, but now and then
“SURPRISE!” a bright pink bloom
will show up. Strong stems on a fine
plant.....\$25.00

MRS. FRANKLIN D. ROOSEVELT
(Franklin, 1941)
Early midseason. Large double blooms
with long, wide petals of soft pink,
this exceptional variety will surely
be one of your favorites.....\$25.00

MRS. LIVINGSTON FARRAND
(Nicholls, 1935)
Pink double, late midseason. The
outstanding feature is its color, a
very pleasing clear bright pink.....\$25.00

MYRA MACRAE
(Tischler, 1967)
Double, late. A peony with beautiful
blooms of lavender pink, this is sure
to be among the favorites with all
who grow it.....\$25.00



MILLIE STOVER



MINNIE SHAYLOR



MISS AMERICA



MME EMILE LEMOINE



MONS JULES ELIE



MONS MARTIN CAHUZAC



MR. ED



**MRS. FRANKLIN
D. ROOSEVELT**



**MRS. LIVINGSTONE
FARRAND**



MYRA MACRAE

MYRTLE GENTRY

(Brand, 1935)

Light pink double, with nice fragrance.
Blooms late midseason.....\$30.00

MYRTLE TISCHLER

(Tischler, 1963)

Very large, deep pink flowers similar to Princess Margaret, and some people think Myrtle is an even stronger grower, tall growing plant..... \$25.00

NANCY NICHOLLS

(Nicholls, 1941)

Large double, blush to white symetrical blooms with wide petals. Late.....\$20.00

NICK SHAYLOR

(Allison, 1931)

Double, late. Very large, beautiful blooms are light pink to near white with red splashes. At the close of the peony season this flower opens in all its splendor. Near perfect form – excellent garden flower or show flower.....\$25.00

NIPPON BEAUTY

(Auten, 1927)

Japanese, late midseason. Nice blooms, with guard petals of deep, bright red, and staminodes the same color, edged yellow, on a good plant. A popular variety admired by all.... \$20.00

NORMA VOLZ

(Volz, 1962)

Very large white double, seedling from Miss America.....\$30.00

PATRICIA HANRATTY

(Gardner, before 1951)

Japanese. Very large flowers. Guard petals are rose red, staminodes rose, edged with lemon..... \$25.00

PAUL M. WILD

(Wild, 1964)

Double, midseason. Strikingly beautiful red blooms, very large and well formed, on a fine plant. This is one of our favorite reds, and we think it will be one of your favorites too.....\$25.00

PINK PRINCESS

(Origin unknown, but probably Sass)

Single, bright pink, with darker speckles. If you collect singles, this one you must have.....\$25.00

PLAINSMAN

(Bigger, 1949)

Japanese. White guard petals. Sometimes showing just a hint of pink, surround a yellow center. Foliage and stems are very good.....\$20.00

PRAIRIE AFIRE

(Brand, 1932)

A fine Japanese, with contrasting centers. Blooms midseason..... \$20.00

PRESIDENT ROOSEVELT

(Warnaar, 1905)

A good red double, midseason. Use for garden or cutting..... \$20.00



MYRTLE GENTRY



MYRTLE TISCHLER



NANCY NICHOLLS



NICK SHAYLOR



NIPPON BEAUTY



NORMA VOLZ



PATRICIA HANRATTY



PAUL M. WILD



PINK PRINCESS



PLAINSMAN



PRAIRIE AFIRE



PRESIDENT ROOSEVELT

PRESIDENT TAFT

(Blaauw, 1909)

Refined double blooms come late in the peony season. They are light pink, with red markings..... \$25.00

RASPBERRY SUNDAE

(Klehm, 1968)

Double, midseason. A delectable blend of cream, pink, and raspberry, this is a flower that would be right at home in an ice parlor. Large beautiful blooms on a fine plant..... \$25.00

RED CHARM

(Glasscock, 1944)

Probably the best known and cherished of all hybrid peonies. Very dark glistening red bomb double opens in the early peony season..... \$30.00

RED GRACE

(Glasscock, registered by Klehm)

Hybrid double, early. A great, many petaled bright red flower grows into a huge globe – a real traffic stopper. It has the largest blooms of all the hybrids in this catalog, and is a variety we highly recommend.....\$30.00

RENATO

(Murawska, 1949)

Double, midseason. An excellent variety with medium red blooms, to be used as a garden flower or cut flower.....\$20.00

REQUIEM

(Saunders, 1941)

White single hybrid. Petals have good substance. Leaves are very large, with deep green color. Vigorous grower.....\$25.00

ROSABEL

(Sass, 1937)

Double, midseason. With well formed, rose red flowers on a good plant, this will make a nice addition to your garden.....\$20.00

ROSALIE

(Auten, 1927)

Rose red double to semi-double medium sized blooms on a low growing plant. Good choice to fill that very special smaller space on your garden. A real charmer..... \$20.00

ROSE PEARL

(Bigger, 1963)

Medium pink double, midseason. Good plant and flower..... \$25.00

SARAH BERNHARDT

(Lemoine, France, 1906)

Named for a famous actress of the time, this is a late blooming, very full double of medium pink. In the garden the great blooms sometimes seem too heavy for the stems, but this variety makes an excellent cut flower, so why not treat yourself to a pink bouquet?.....\$20.00

SCARLET O'HARA

(Glasscock, 1956)

Hybrid, early. As beautiful and strong willed as her movie namesake – bright scarlet red blooms on an exceptionally strong plant. Excellent companion plant for Illini Warrior..... \$20.00

SEA SHELL

(Sass, 1937)

Fine bright pink single. One of the few cultivars to win the America Peony Society Gold Metal Award..... \$20.00



PRESIDENT TAFT



RASPBERRY SUNDAE



RED CHARM



RED GRACE



RENATO



REQUIEM



ROSABEL



ROSALIE



ROSE PEARL



SARAH BERNHARDT



SCARLET O'HARA



SEA SHELL

SHAWNEE CHIEF
(Bigger, 1940)
Double midseason, dark red.
Dependable garden flower or cut
flower on a strong plant..... \$20.00

SHIRLEY TEMPLE
(Origin uncertain, but it was before 1948)
White Double, midseason. Nice
blooms on a short, bushy plant
with good stems. Some petals
may be edged in red..... \$25.00

SKY PILOT
(Auten, 1939)
Japanese, with guard petals a very pleasing
tone of medium pink, and a yellow
center sometimes touched with pink.
Plant stands tall and proud..... \$25.00

SMOUTH
(France, 1845)
Hybrid, with red single flowers, and cut
leaf foliage. In this year's list Smouthi
will be the first to bloom.....\$20.00

STARDUST
(Glasscock, Falk, 1964)
Single, white, with every petal
in place.....\$25.00

SUMMER SNOW
(Glasscock/Falk, 1987)
White single hybrid. A recent
introduction Mrs. Falk selected
from her father's seedlings.....\$20.00

THE MIGHTY MO
(Wild, 1950)
Double midseason. Deep, rich red,
accented with yellow stamens.
Excellent garden display, and a
long lasting cut flower..... \$20.00

TISH
(Tischler, 1972)
Japanese. Guard petals glistening
dark red, staminodes red, edged gold.
Outstanding!.....\$30.00

TOP BRASS
(Klehm)
Bomb type double, midseason.
Guard petals are creamy white,
and the center petals are a lovely
combination of ivory, light pink
and yellow, with the subtle tones
changing day by day.....\$20.00

VANITY
(Brand, 1951)
Light pink Japanese, with light green
foliage. Over the years Mr. Brand
introduced many fine varieties –
this was the last one.....\$30.00

VERA TISCHLER
(Tischler)
Bright pink Japanese with yellow
center. When most people think
of peonies, they think only of the
ones with big full double flowers.
We should also grow more of the
airy Japanese type, which are usually
able to weather a late spring storm
that can bring the heavier double
blooms to the ground.....\$20.00

VIRGINIA MARY
(Pfeiffer, 1932)
Double, pink, early. Medium sized
blooms will make a delightful
display for your kitchen table..... \$20.00



SHAWNEE CHIEF



SHIRLEY TEMPLE



SKY PILOT



SMOUTH



STARDUST



SUMMER SNOW



THE MIGHTY MO



TISH



TOP BRASS



VANITY



VERA TISCHLER



VIRGINIA MARY

WESTERNER

(Bigger, 1942)

Japanese, midseason. Large blooms of medium pink, with a large mound of yellow staminodes. Well known and popular.....\$20.00

WILLIAM PICKETT

(Tischler, 1967)

White double, late. Medium sized blooms on a shorter plant. A fine landscape peony..... \$30.00

ZUZU

(Krekler, 1955)

Minnie Shaylor seedling. Semi-double opens a delightful baby pink, and gradually turns to white..... \$20.00



WESTERNER

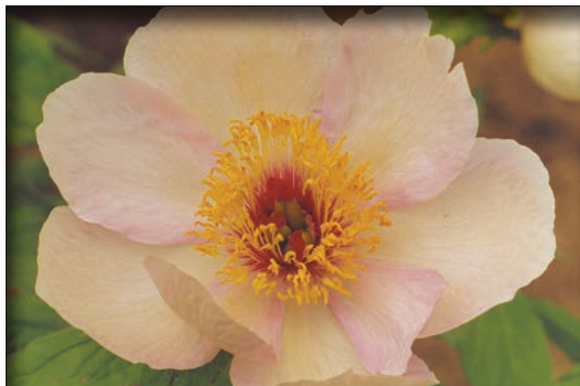


WILLIAM PICKETT



ZUZU





SINGLE



JAPANESE



SEMI-DOUBLE



DOUBLE



BOMB



CLOSE NEIGHBORS

JOIN THE
AMERICAN PEONY SOCIETY
www.americanpeonysociety.org

JOIN THE
MINNESOTA PEONY SOCIETY
www.mnpeony.org



PEONY SEED PODS

SEVALD NURSERY

Mail Address: 4937 - 3rd Avenue South, Minneapolis, MN 55419

Tel: (evenings or early mornings) 612-822-3279